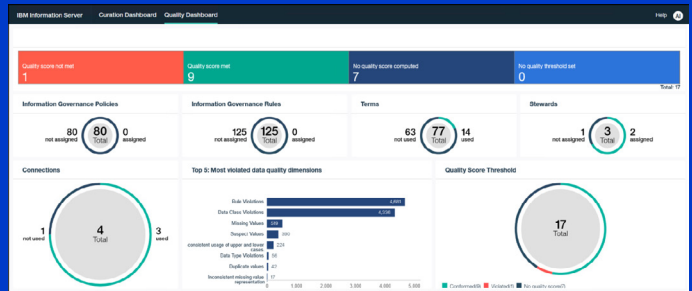


# What's new in IBM InfoSphere Information Server 11.7

- IBM® DataStage® Flow Designer, a thin-client graphical user interface
- Business-user centric Enterprise Search, also known as shop for data
- Machine learning automation
- Compliance functionality now includes unstructured data
- Rapid deployment using Docker containers
- Hadoop performance enhancements



Easily check data quality and health from the dashboard

Data is coming from everywhere: mobile, cloud, social and sensor data from the Internet of Things. How you view an entity or an organization is changing because you're able to see data from different sources, adding dimensions to what you already knew.

Taking advantage of this digital transformation requires a [trusted analytics foundation](#) that breaks data out of its silos and enables an organization to discover patterns that weren't previously visible.

Organizations can move quickly and with more confidence by using trusted data for Business Intelligence, analytics and go beyond human scale to drive efficiencies with machine learning.

[IBM InfoSphere® Information Server 11.7](#) contains essential elements to create the trusted analytics foundation needed for the journey to digital transformation.

This brief gives you an overview of what's new in IBM InfoSphere Information Server 11.7 to further your digital transformation. For more information, visit: [ibm.com/unified-governance-integration](http://ibm.com/unified-governance-integration)

See the IBM analytics roadmap to learn what's next in the continuous innovation lifecycle.

For roadmaps, visit: [ibm.biz/AnalyticsRoadmaps](http://ibm.biz/AnalyticsRoadmaps)

To submit feedback, visit: [ibm.biz/IBMAalyticsIdeasPortal](http://ibm.biz/IBMAalyticsIdeasPortal)

## Empowering users through tailored design and automation



Easily find data assets and explore their relationships in a new graph explorer that looks for information in structured and unstructured assets.



Bring crowdsourcing to governance by allowing users to rate and comment on critical assets.



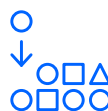
With one click, register new data sets and add metadata to new or existing workspaces.



Accelerate the speed of metadata classification with machine learning that improves continuously as it's used.



Decrease the time to classify and map data with new industry models and compliance frameworks, including the General Data Protection Regulation (GDPR).



Simplify the data quality process with automated rules that trigger actions based on business events.



Begin the move toward one-click container-based micro-service architecture starting with Enterprise Search and DataStage.

## Empowering users through tailored design and automation

Increase productivity with the new **DataStage Flow Designer**, a thin-client interface that eliminates the need for costly Citrix infrastructure.

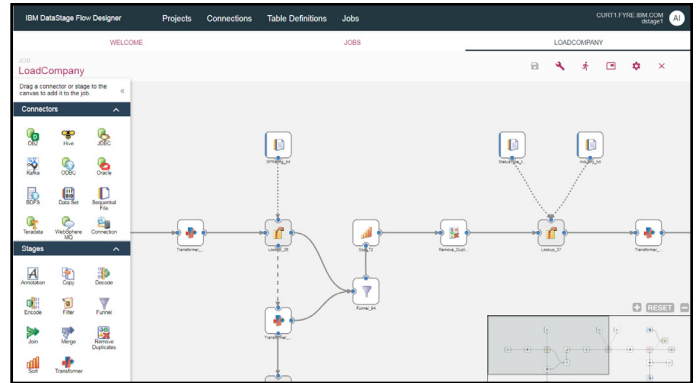
Simplify job development with **automatic schema propagation** to subsequent stages.

Speed job creation with **highlighted compile errors** that allow users to fix problems with a quick hover, before recompiling.

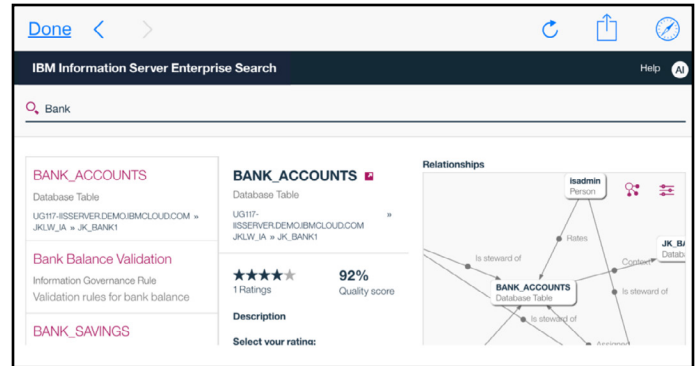
Easily learn DataStage Flow Designer using **quick tours** accessible on each dashboard

The new DataStage Flow Designer is **compatible with earlier versions**, so pre-existing DataStage jobs will work in 11.7 without migration.

The Designer evolves to support non-technical users to further facilitate self-service data access.



DataStage Flow Designer



Access Enterprise Search from a mobile device

## Reduce the need for hand-coding and scripting and increase integration with services on cloud platforms with new, native connectivity.

Increased resilience and speed when run as part of the Hadoop stack. 11.7 has the following updates:

- HBase connector
- Hadoop file connector performance and security enhancements
- Kafka connector security improvements
- Hive connector
- MongoDB support

New features to develop jobs that read data from and write data to Amazon, including:

- S3 enhancements
- Amazon EMR Hive
- Amazon Redshift

**Additionally, power a real-time data lake with IBM Data Replication including support for Kafka**



**Ready to build a trusted analytics foundation?**  
To see how IBM is redefining data governance, quality and integration, visit: [ibm.com/unified-governance-integration](http://ibm.com/unified-governance-integration)

© Copyright IBM Corporation 2018. IBM, the IBM logo, ibm.com, DataStage and InfoSphere are trademarks of IBM Corp. registered in many jurisdictions worldwide. Other product and service names might be trademarks of IBM or other companies. A current list of IBM trademarks is available on the web at "Copyright and trademark information" at [ibm.com/legal/copytrade.shtml](http://ibm.com/legal/copytrade.shtml)

**Notice:** Clients are responsible for ensuring their own compliance with various laws and regulations, including the European Union General Data Protection Regulation. Clients are solely responsible for obtaining advice of competent legal counsel as to the identification and interpretation of any relevant laws and regulations that may affect the clients' business and any actions the clients may need to take to comply with such laws and regulations. The products, services, and other capabilities described herein are not suitable for all client situations and may have restricted availability. IBM does not provide legal, accounting or auditing advice or represent or warrant that its services or products will ensure that clients are in compliance with any law or regulation.